

I MINA' TRENTAI TRES NA LIHESLATURAN GUÅHAN
2015 (SECOND) REGULAR SESSION

Bill No. 227-33 (COR)

Introduced by:

Tina Rose Muña Barnes

AN ACT TO ADD A NEW §40145 TO CHAPTER 40 OF TITLE 5, GUAM CODE ANNOTATED; RELATIVE TO PLACING TRACT 3621 (FORMERLY BASIC LOT NO. 381-2, MUNICIPALITY OF INARAJAN), CURRENTLY LEASED FROM THE CHAMORRO LAND TRUST COMMISSION UNDER THE ADMINISTRATIVE JURISDICTION OF THE INARAJAN MAYOR'S OFFICE.

2015 DEC 30 PM 4:18
jrm
aist

BE IT ENACTED BY THE PEOPLE OF GUAM:

1 **Section 1. Legislative Findings and Intent.** *I Liheslaturan Guåhan* finds
2 that the population of Inarajan, Guam, now exceeds 3,000 people, making it the
3 second most populated village in Southern Guam. Despite this fact, the village of
4 Inarajan remains without a recreational sports facility for its children and families.

5 *I Liheslaturan Guåhan* further finds that the Chamorro Land Trust
6 Commission leased Tract 3621 (formerly basic lot no. 381-2), Municipality of
7 Inarajan, Guam, containing an aggregate area of 5.37 acres (21,734 ± sq. meters),
8 to the Inarajan Mayor's Office for this purpose on March 30, 2000, but that the
9 construction of an Inarajan Sports Facility has stalled because of a lack of funding.

10 Additionally, *I Liheslaturan Guåhan* finds that the CLTC lease for Tract 3621
11 (formerly basic lot no. 381-2), Municipality of Inarajan, Guam, will expire in six
12 years, preventing the construction of a long-term sports facility funded through
13 federal sources.

14 *I Liheslaturan Guåhan* intends to place Tract 3621 (formerly basic lot no. 381-
15 2), Municipality of Inarajan, Guam, under the administrative jurisdiction of the

1 Inarajan Mayor's Office to permit the construction of a multi-purpose sports facility
2 for the people of Inarajan funded by the Community Block Grant Program or such
3 other sources of funding as may be viable and appropriate.

4 **Section 2.** A new §40145 is *added* to Chapter 40 of Title 5, Guam Code
5 Annotated to read as follows:

6 "§ **40145.** Transfer of Tract 3621 (formerly basic lot no. 381-2),
7 Municipality of Inarajan, Guam,

8 (a) Notwithstanding any other provision of law, rule or regulation,
9 Tract 3621 (formerly basic lot no. 381-2), Municipality of Inarajan, Guam, is
10 hereby transferred from the inventory of the Chamorro Land Trust
11 Commission to the Office of the Inarajan Mayor for the purpose of
12 constructing a multi-purpose sports facility. The transfer of said
13 administrative jurisdiction shall become effective upon the enactment of this
14 Act.

15 (b) Should Tract 3621 (formerly basic lot no. 381-2), Municipality
16 of Inarajan, no longer be used for the construction of a multi-purpose sports
17 facility, it shall revert to the inventory of the Chamorro Land Trust
18 Commission.

19 (c) The Office of the Mayor of Inarajan *shall* be responsible for the
20 overall administration, operation and maintenance of the Tract 3621 (formerly
21 basic lot no. 381-2), Municipality of Inarajan, Guam, and any facility built on
22 said lot for use by the residents of Inarajan and the island community."

23 **Section 3. Effective Date.** This Act *shall* take effect upon its enactment.

EXHIBIT A

GGTN 1963

AREA = 24,619.62 SQ.M.
= 65,002 ± SQ.FT.

GGTN 4.77
123,316.416
65,100.848

LOT 100
YOVERBA M MENDO
3829
C # 13542

LOT 99NEW-3
DAVID J LUJAN
DOC # 342973
342974

T 99NEW-4
10 J LUJAN
C # 342974
342973

PQB
N 28,911.875
E 50,394.180

LOT 125-3R
VIRGINIA GODO PAJANO
C.T. # 36276

LOT 2RG
60' WIDE PUBLIC ACCESS & UTIL.
EASTMENT DOC. # 10888
107

LOT II
A=929.03 SQ.M.
A=10,000 ± SQ.FT.

LOT 104
EDWARD & WEGER
MARTINA F WEGER
LOT # 34102

LOT 12
A=929.03 SQ.M.
A=10,000 ± SQ.FT.

LOT 10
A=941.65 SQ.M.
A=10,134 ± SQ.FT.

LOT 13
A=946.34 SQ.M.
A=10,186 ± SQ.FT.

LOT 99NEW-R4
DAVID J LUJAN
DOC # 342974
342973

LOT 9
A=929.04 SQ.M.
A=10,000 ± SQ.FT.

LOT 381-1
GOVERNMENT LAND
RESERVED FOR PARK AREA

LOT 122-2-R2
VICENTE L.G. QUINATA
PATRICIA QUINATA
C.T. # 10112

LOT 14
32.093
DUE WEST

LOT 14
A=929.03 SQ.M.
A=10,000 ± SQ.FT.

LOT 8
A=929.03 SQ.M.
A=10,000 ± SQ.FT.

LOT 6
A=1,032.61 SQ.M.
A=11,45 ± SQ.FT.

LOT 15
32.093
DUE WEST

LOT 15
A=929.02 SQ.M.
A=10,000 ± SQ.FT.

LOT 7
A=1,046.46 SQ.M.
A=11,264 ± SQ.FT.

LOT 5
A=1,025.72 SQ.M.
A=11,041 ± SQ.FT.

LOT 16
30.071
DUE WEST

LOT 16
A=929.02 SQ.M.
A=10,000 ± SQ.FT.

LOT 3
A=1,046.50 SQ.M.
A=11,264 ± SQ.FT.

LOT 4
A=1,029.18 SQ.M.
A=11,078 ± SQ.FT.

LOT 17
30.078
DUE WEST

LOT 17
A=929.04 SQ.M.
A=10,000 ± SQ.FT.

LOT 1
A=1,028.83 SQ.M.
A=11,074 ± SQ.FT.

LOT 2
A=1,029.16 SQ.M.
A=11,078 ± SQ.FT.

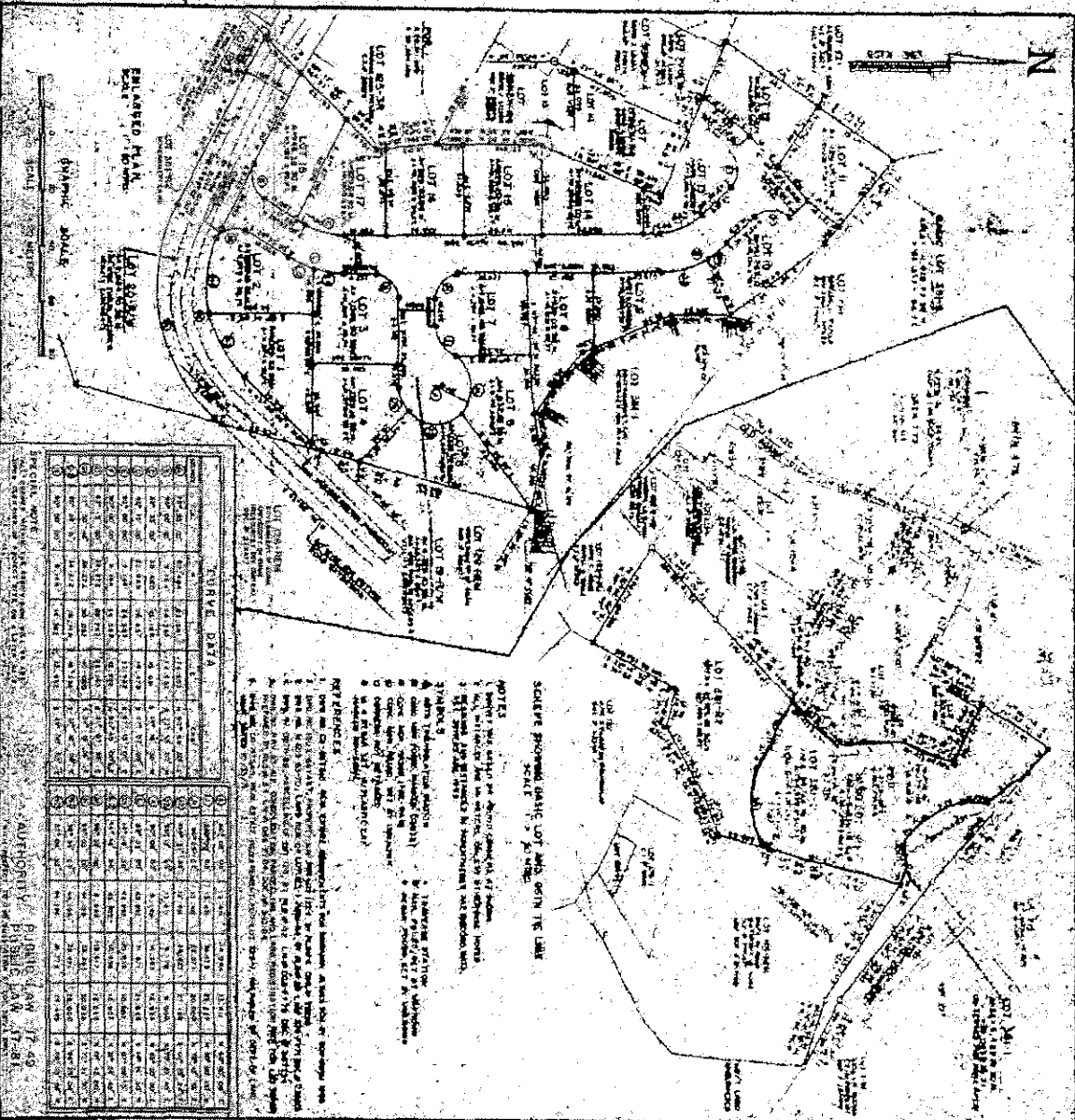
LOT 18
30.078
DUE WEST

LOT 18
A=946.36 SQ.M.
A=10,186 ± SQ.FT.

LOT 12
GOVERNMENT
UNIVERSITY
RESOURCE
DOC. #

COURSE	Δ

Exhibit A



ENLARGED PLAN
OF LOT 10

CURVE DATA

Station	Chord	Angle	Radius	Length	Area
1+00	100.00	90.00	70.71	157.08	7854.00
1+50	150.00	90.00	106.07	235.62	11781.00
2+00	200.00	90.00	141.42	314.16	15708.00
2+50	250.00	90.00	176.78	392.70	19635.00
3+00	300.00	90.00	212.13	471.24	23562.00
3+50	350.00	90.00	247.49	549.78	27489.00
4+00	400.00	90.00	282.84	628.32	31416.00
4+50	450.00	90.00	318.20	706.86	35343.00
5+00	500.00	90.00	353.55	785.40	39270.00
5+50	550.00	90.00	388.91	863.94	43197.00
6+00	600.00	90.00	424.26	942.48	47124.00
6+50	650.00	90.00	459.62	1021.02	51051.00
7+00	700.00	90.00	494.97	1099.56	54978.00
7+50	750.00	90.00	530.33	1178.10	58905.00
8+00	800.00	90.00	565.68	1256.64	62832.00
8+50	850.00	90.00	601.04	1335.18	66759.00
9+00	900.00	90.00	636.39	1413.72	70686.00
9+50	950.00	90.00	671.75	1492.26	74613.00
10+00	1000.00	90.00	707.10	1570.80	78540.00

NOTES

1. Report not valid for other than the lot shown.
2. All dimensions are in feet and inches.
3. All bearings are in degrees, minutes and seconds.
4. All curves are in feet.
5. All areas are in square feet.
6. All lengths are in feet.
7. All angles are in degrees.
8. All bearings are in degrees, minutes and seconds.
9. All curves are in feet.
10. All areas are in square feet.
11. All lengths are in feet.
12. All angles are in degrees.
13. All bearings are in degrees, minutes and seconds.
14. All curves are in feet.
15. All areas are in square feet.
16. All lengths are in feet.
17. All angles are in degrees.
18. All bearings are in degrees, minutes and seconds.
19. All curves are in feet.
20. All areas are in square feet.
21. All lengths are in feet.
22. All angles are in degrees.
23. All bearings are in degrees, minutes and seconds.
24. All curves are in feet.
25. All areas are in square feet.
26. All lengths are in feet.
27. All angles are in degrees.
28. All bearings are in degrees, minutes and seconds.
29. All curves are in feet.
30. All areas are in square feet.
31. All lengths are in feet.
32. All angles are in degrees.
33. All bearings are in degrees, minutes and seconds.
34. All curves are in feet.
35. All areas are in square feet.
36. All lengths are in feet.
37. All angles are in degrees.
38. All bearings are in degrees, minutes and seconds.
39. All curves are in feet.
40. All areas are in square feet.
41. All lengths are in feet.
42. All angles are in degrees.
43. All bearings are in degrees, minutes and seconds.
44. All curves are in feet.
45. All areas are in square feet.
46. All lengths are in feet.
47. All angles are in degrees.
48. All bearings are in degrees, minutes and seconds.
49. All curves are in feet.
50. All areas are in square feet.
51. All lengths are in feet.
52. All angles are in degrees.
53. All bearings are in degrees, minutes and seconds.
54. All curves are in feet.
55. All areas are in square feet.
56. All lengths are in feet.
57. All angles are in degrees.
58. All bearings are in degrees, minutes and seconds.
59. All curves are in feet.
60. All areas are in square feet.
61. All lengths are in feet.
62. All angles are in degrees.
63. All bearings are in degrees, minutes and seconds.
64. All curves are in feet.
65. All areas are in square feet.
66. All lengths are in feet.
67. All angles are in degrees.
68. All bearings are in degrees, minutes and seconds.
69. All curves are in feet.
70. All areas are in square feet.
71. All lengths are in feet.
72. All angles are in degrees.
73. All bearings are in degrees, minutes and seconds.
74. All curves are in feet.
75. All areas are in square feet.
76. All lengths are in feet.
77. All angles are in degrees.
78. All bearings are in degrees, minutes and seconds.
79. All curves are in feet.
80. All areas are in square feet.
81. All lengths are in feet.
82. All angles are in degrees.
83. All bearings are in degrees, minutes and seconds.
84. All curves are in feet.
85. All areas are in square feet.
86. All lengths are in feet.
87. All angles are in degrees.
88. All bearings are in degrees, minutes and seconds.
89. All curves are in feet.
90. All areas are in square feet.
91. All lengths are in feet.
92. All angles are in degrees.
93. All bearings are in degrees, minutes and seconds.
94. All curves are in feet.
95. All areas are in square feet.
96. All lengths are in feet.
97. All angles are in degrees.
98. All bearings are in degrees, minutes and seconds.
99. All curves are in feet.
100. All areas are in square feet.

DEPARTMENT OF PUBLIC WORKS

ENGINEER

PLANNING DIVISION

DATE _____

PROJECT _____

SCALE _____

APPROVED _____

DATE _____

DEPARTMENT OF LAND MANAGEMENT

ENGINEER

DATE _____

PROJECT _____

SCALE _____

APPROVED _____

DATE _____

5097